

# codemaker

PRINT RIBBONS • CODERS • SPARE PARTS • FULL SUPPORT

One Stop Solution for Confectionery,  
Bakery & Snack Food Labelling

## CM100X ALSO AVAILABLE

CM100X is the same ribbon grade but coated on 4.0 micron PET film allowing for longer ribbon lengths



## TYPICAL APPLICATIONS



RETAIL



SHIPPING



GENERAL



PHARMACY



INVENTORY



PRODUCT ID



HORTICULTURE



SHELVING



FLEXIBLE  
PACKAGING



HEALTHCARE



ASSET  
TRACKING



LOGISTICS



## PRODUCT DESCRIPTION

This high performance near edge wax resin grade is the most flexible product designed to offer excellent all-round performance on near edge technology desktop, industrial and in-line coding printer systems. This grade offers maximum print performance on all types of coated or non-coated label materials along with all types of packaging films and medical paper. It has a proven track record as a drop-in replacement for the branded products supplied by OEMs such as **Toshiba TEC, Avery, Markem, Videojet & ICE**. With ISEGA approval, this grade is the ideal choice for in-line coders or desktop printers used in food packaging applications. It prints at a low temperature and offers bold, black prints at print speeds of up to 20 inches per second as well as having a high resin content that allows for high levels of durability to the printed image. This grade is available in a very wide range of stock sizes for next day delivery.

## RECOMMENDED SUBSTRATES

Coated paper and tag materials, synthetic paper, polyethylene, polypropylene, polyolefin, medical paper, most types of flexible packaging films.

## PERFORMANCE PROPERTIES

PRINT SENSITIVITY	9
HEAT RESISTANCE	7
ABRASION RESISTANCE	9
SOLVENT RESISTANCE	4
LABEL ADAPTABILITY	9

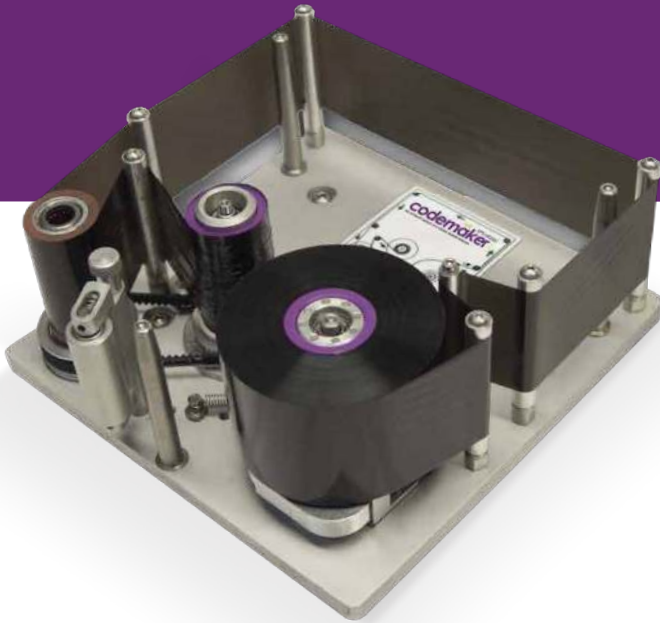
LOW MEDIUM HIGH

# CM100

HIGH PERFORMANCE NEAR EDGE WAX RESIN



[www.codemakerribbons.com](http://www.codemakerribbons.com)



#### CODEMAKER GRADES

<b>CM100</b>	<b>High Performance Wax Resin</b> Very versatile for all types of labels and packaging films
<b>CM100X</b>	<b>High Performance Wax Resin</b> Coated on 4.0-micron film for longer length ribbons
<b>CM100 Colours</b>	<b>Premium Wax Resin</b> Very versatile for all types of labels and packaging films
<b>CM300</b>	<b>Specialty Resin</b> Extra durability to heat and abrasion with high print speeds

#### PERFORMANCE CHARACTERISTICS

- Prints on most types of packaging films
- Prints on all types of coated papers and synthetic films
- Prints black, bold and crisp text, graphics and barcodes
- Excellent scratch and smudge resistance
- Excellent print quality at speeds up to 500 mm/sec
- Excellent print definition for clean, durable and dense barcodes
- ISEGA certification
- Easy slot-in product replacement for other wax resin grades

#### RIBBON SPECIFICATIONS

DESCRIPTION	TECHNICAL
BASE FILM CARRIER	4.5 Micron Polyester
TOTAL RIBBON THICKNESS	7.0 Microns +/- 0.02
INK TYPE	Wax/Resin (near edge technology)
COLOUR	Black
INK MELTING POINT	70°C
DENSITY	1.8

#### RIBBON STORAGE CONDITIONS

DESCRIPTION	TECHNICAL
TEMPERATURE	5°C to 35°C (41F to 95F)
HUMIDITY	10% to 85% relative humidity
LIGHT	Avoid direct sunlight

#### CERTIFICATIONS AND APPROVALS

DESCRIPTION	TECHNICAL
ISO 9001:2015 & ISO 14001:2015	All ribbons have been manufactured to these international quality standard
RoHs/WEEE	EC directives 2012/19/EU and 2011/65/EU, compliance to the limitation of dangerous substances in electrical and electronics equipment
HEAVY METALS	94/62/EC & 2011/65/EU
TSCA/CP 65	The ribbon does not contain any of the substances on this list
AMES TEST	The ribbon is not mutagenic, does not cause DNA modifications
EC DIRECTIVES	1999/45/EC and 2001/59/EC. This ribbon does not contain any substance classified as dangerous for health
FOOD CONTACT	1935/2004/EC
REACH/SVHC	Does not contain any of the SVHCs listed - 1907 / 2006/EC
DISPOSAL	To be disposed of as mixed industrial waste

This information is the best available on the above ribbon grade. These results should, however, only be regarded as a general guide to material properties and is not a guarantee.



# CM100

HIGH PERFORMANCE NEAR EDGE WAX RESIN



[www.codemakerribbons.com](http://www.codemakerribbons.com)