

codemaker

10/3520

BATCH

PRINT RIBBONS • CODERS • SPARE PARTS • FULL SUPPORT

One Stop Solution for Confectionery,
Bakery & Snack Food Labelling



TYPICAL APPLICATIONS



RETAIL



SHIPPING



GENERAL



PHARMACY



INVENTORY



PRODUCT ID



HORTICULTURE



SHELVING



FLEXIBLE
PACKAGING



HEALTHCARE



ASSET
TRACKING



LOGISTICS



PRODUCT DESCRIPTION

This highly flexible, premium wax resin range of colours is designed to offer excellent performance on near edge technology desktop, industrial and in-line coding printer systems. This grade offers maximum print performance on a wide range of coated papers, synthetic and packaging films. It has a proven track record as a drop-in replacement for the branded products supplied by OEMs such as **Toshiba, TEC, Avery, Markem, Videojet & ICE**. With ISEGA approval, this grade is the ideal choice for in-line coders or desktop printers used in food packaging applications. It offers bold colour prints at print speeds of up to 16 inches per second and has a high resin content that allows for high levels of durability to the printed image. This grade is available in a range of stock sizes for next day delivery.

RECOMMENDED SUBSTRATES

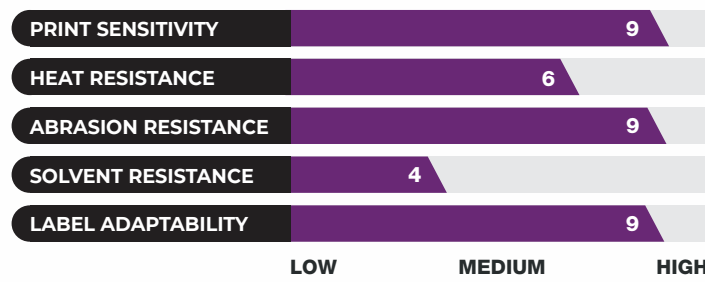
Coated paper and tag materials, synthetic paper, polyethylene, polypropylene, polyolefin, most types of flexible packaging films

AVAILABLE COLOURS



White Matt
Silver

PERFORMANCE PROPERTIES

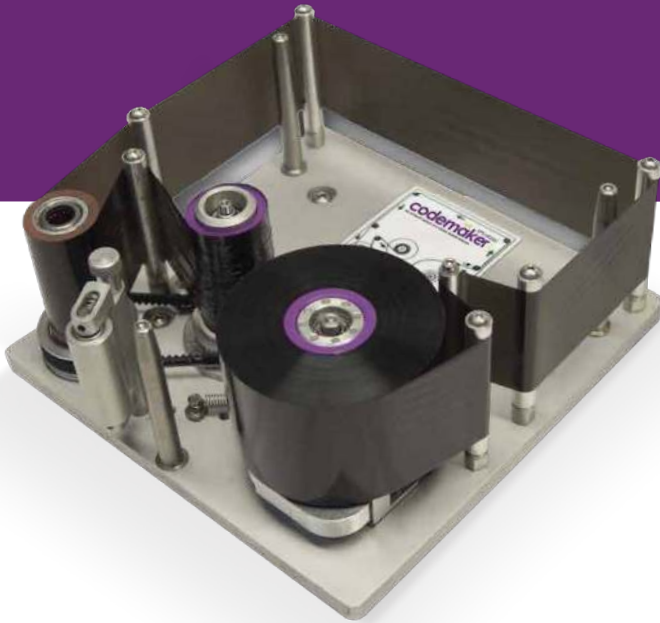


CM100 COLOURS

PREMIUM NEAR EDGE WAX RESIN



www.codemakerribbons.com



CODEMAKER GRADES

CM100	High Performance Wax Resin Very versatile for all types of labels and packaging films
CM100X	High Performance Wax Resin Coated on 4.0-micron film for longer length ribbons
CM100 Colours	Premium Wax Resin Very versatile for all types of labels and packaging films
CM300	Specialty Resin Extra durability to heat and abrasion with high print speeds

PERFORMANCE CHARACTERISTICS

- Prints on most types of packaging films
- Prints on all types of coated papers and synthetic films
- Prints vivid colours with excellent coverage
- Excellent scratch and smudge resistance
- Excellent print quality at speeds up to 400 mm/sec
- Excellent print definition for clean, durable and dense barcodes
- ISEGA certification
- Easy slot-in product replacement for other wax resin grades

RIBBON SPECIFICATIONS

DESCRIPTION	TECHNICAL
BASE FILM CARRIER	4.5 Micron Polyester
TOTAL RIBBON THICKNESS	Varies (according to colour)
INK TYPE	Wax/Resin (near edge technology)
COLOUR	Various
INK MELTING POINT	70°C
DENSITY	0.8

RIBBON STORAGE CONDITIONS

DESCRIPTION	TECHNICAL
TEMPERATURE	5°C to 35°C (41F to 95F)
HUMIDITY	10% to 85% relative humidity
LIGHT	Avoid direct sunlight

CERTIFICATIONS AND APPROVALS

DESCRIPTION	TECHNICAL
ISO 9001:2015 & ISO 14001:2015	All ribbons have been manufactured to these international quality standard
RoHs/WEEE	EC directives 2012/19/EU and 2011/65/EU, compliance to the limitation of dangerous substances in electrical and electronics equipment
HEAVY METALS	94/62/EC & 2011/65/EU
TSCA/CP 65	The ribbon does not contain any of the substances on this list
AMES TEST	The ribbon is not mutagenic, does not cause DNA modifications
EC DIRECTIVES	1999/45/EC and 2001/59/EC. This ribbon does not contain any substance classified as dangerous for health
FOOD CONTACT	1935/2004/EC
REACH/SVHC	Does not contain any of the SVHCs listed - 1907 / 2006/EC
DISPOSAL	To be disposed of as mixed industrial waste

This information is the best available on the above ribbon grade. These results should, however, only be regarded as a general guide to material properties and is not a guarantee.



CM100 COLOURS

PREMIUM NEAR EDGE WAX RESIN



www.codemakerribbons.com