

codemaker

10/3520

BATCH

PRINT RIBBONS • CODERS • SPARE PARTS • FULL SUPPORT

One Stop Solution for Confectionery,
Bakery & Snack Food Labelling

THIS GRADE IS THE SAME AS CM100

But coated on 4.0 micron PET film allowing for longer ribbon lengths



TYPICAL APPLICATIONS



RETAIL



SHIPPING



GENERAL



PHARMACY



INVENTORY



PRODUCT ID



HORTICULTURE



SHELVING



FLEXIBLE PACKAGING



HEALTHCARE



ASSET TRACKING



LOGISTICS



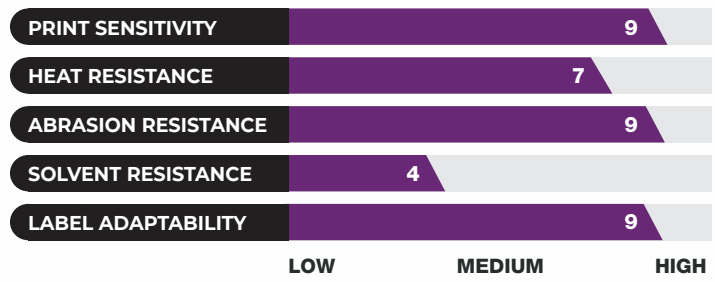
PRODUCT DESCRIPTION

This high performance near edge wax resin grade is the most flexible product designed to offer excellent all-round performance on near edge technology desktop, industrial and in-line coding printer systems. This grade offers maximum print performance on all types of coated or non-coated label materials along with all types of packaging films and medical paper. It has a proven track record as a drop-in replacement for the branded products supplied by OEMs such as **Toshiba TEC, Avery, Markem, Videojet & ICE**. With ISEGA approval, this grade is the ideal choice for in-line coders or desktop printers used in food packaging applications. It prints at a low temperature and offers bold, black prints at print speeds of up to 20 inches per second as well as having a high resin content that allows for high levels of durability to the printed image. This grade is available in a very wide range of stock sizes for next day delivery.

RECOMMENDED SUBSTRATES

Coated paper and tag materials, synthetic paper, polyethylene, polypropylene, polyolefin, medical paper, most types of flexible packaging films.

PERFORMANCE PROPERTIES

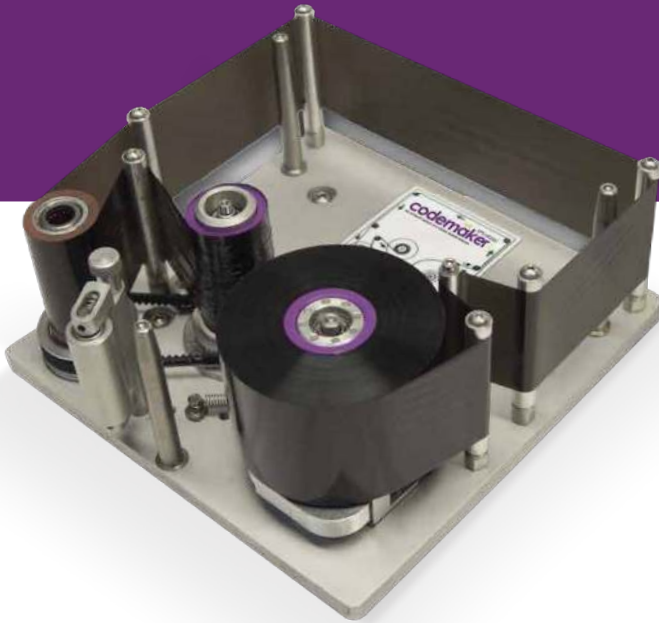


CM100X

HIGH PERFORMANCE NEAR EDGE WAX RESIN



www.codemakerribbons.com



CODEMAKER GRADES

CM100	High Performance Wax Resin Very versatile for all types of labels and packaging films
CM100X	High Performance Wax Resin Coated on 4.0-micron film for longer length ribbons
CM100 Colours	Premium Wax Resin Very versatile for all types of labels and packaging films
CM300	Specialty Resin Extra durability to heat and abrasion with high print speeds

PERFORMANCE CHARACTERISTICS

- Coated on 4.0 micron PET film allowing for longer ribbon lengths
- Prints on most types of packaging films
- Prints on all types of coated papers and synthetic films
- Prints black, bold and crisp text, graphics and barcodes
- Excellent scratch and smudge resistance
- Excellent print quality at speeds up to 500 mm/sec
- Excellent print definition for clean, durable and dense barcodes
- ISEGA certification
- Easy slot-in product replacement for other wax resin grades

RIBBON SPECIFICATIONS

DESCRIPTION	TECHNICAL
BASE FILM CARRIER	4.0 Micron Polyester
TOTAL RIBBON THICKNESS	6.5 Microns +/- 0.02
INK TYPE	Wax/Resin (near edge technology)
COLOUR	Black
INK MELTING POINT	68°C
DENSITY	1.8

RIBBON STORAGE CONDITIONS

DESCRIPTION	TECHNICAL
TEMPERATURE	5°C to 35°C (41F to 95F)
HUMIDITY	10% to 85% relative humidity
LIGHT	Avoid direct sunlight

CERTIFICATIONS AND APPROVALS

DESCRIPTION	TECHNICAL
ISO 9001:2015 & ISO 14001:2015	All ribbons have been manufactured to these international quality standard
RoHs/WEEE	EC directives 2012/19/EU and 2011/65/EU, compliance to the limitation of dangerous substances in electrical and electronics equipment
HEAVY METALS	94/62/EC & 2011/65/EU
TSCA/CP 65	The ribbon does not contain any of the substances on this list
AMES TEST	The ribbon is not mutagenic, does not cause DNA modifications
EC DIRECTIVES	1999/45/EC and 2001/59/EC. This ribbon does not contain any substance classified as dangerous for health
FOOD CONTACT	1935/2004/EC
REACH/SVHC	Does not contain any of the SVHCs listed - 1907 / 2006/EC
DISPOSAL	To be disposed of as mixed industrial waste

This information is the best available on the above ribbon grade. These results should, however, only be regarded as a general guide to material properties and is not a guarantee.



CM100X

HIGH PERFORMANCE NEAR EDGE WAX RESIN



www.codemakerribbons.com